

Sanding Survey Office

Quick Guide

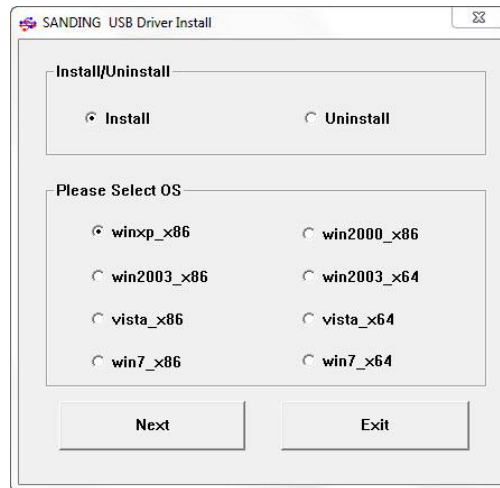
1. Preparations

1.1 Install the driver for USB-to-com port

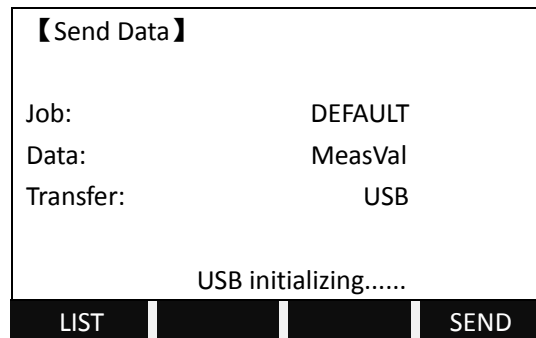
Run “PL2303_Prolific_DriverInstaller_v130.exe”, follow the steps until it is installed successfully.

1.2 Install the driver for miniUSB cable

Run the software “USB driver”



Then connect the instrument and the computer with the miniUSB cable. In the total station, press MENU—PAGE—F3.Data Transfer—Choose the Transfer to be “USB”, then the screen will show “USB initializing.....”

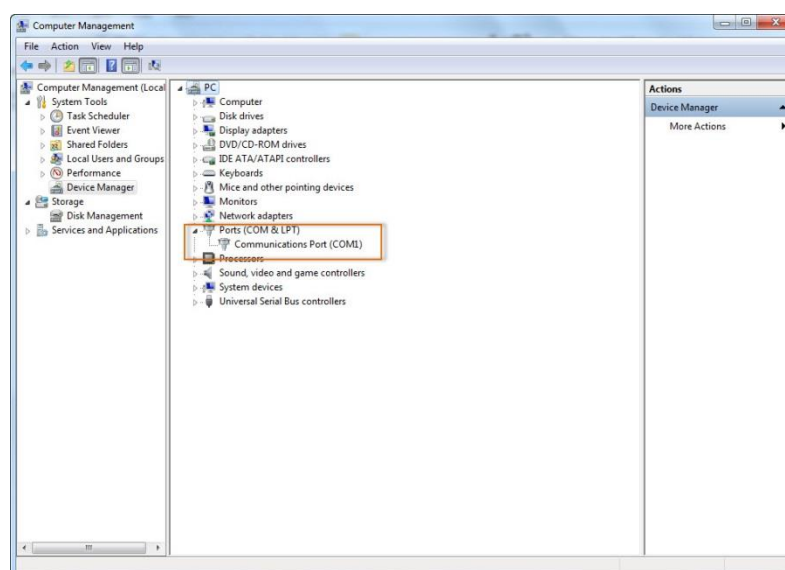


At the same time, click “Next” in the USB driver software until it shows installation successful.

2. Transferring via serial cable

2.1 Download

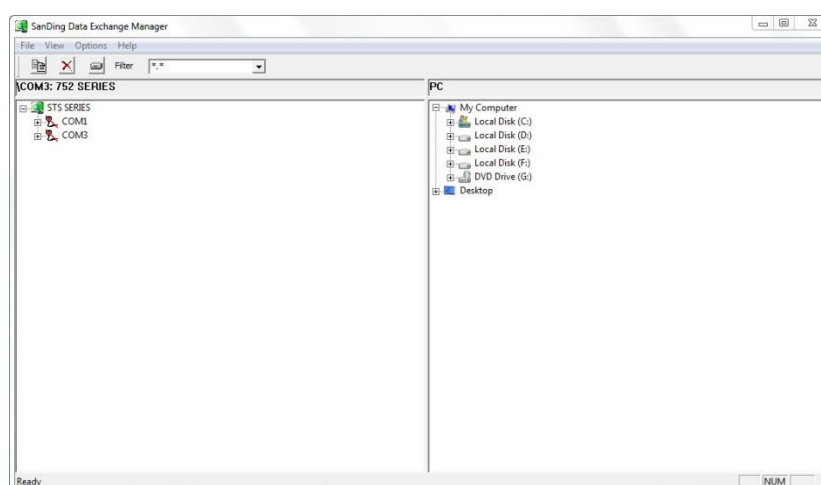
Connect the instrument and the computer with the serial cable, check the com port through My computer—Device manager.



Then set the comm parameters in the total station. (MENU-PAGE-F2.Comm Parameters, *after setting, press F4 SET. to confirm the setting*), then press ESC until the total station returns to the basic measurement screen, i.e., the first screen when the instrument is powered on.

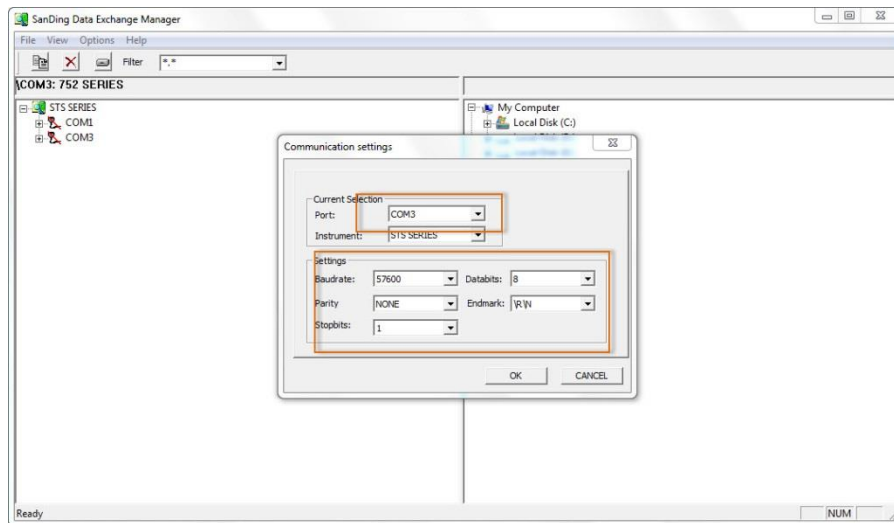
【Comm Parameters】			
Baudrate	:	57600	↔
DataBits	:	8	↔
Parity	:	None	↔
End Mark	:	CR/LF	↔
Stop Bit	:	1	
			SET.

Run the software, click Data Exchange Manager, the software will automatically detect the com port being used now.

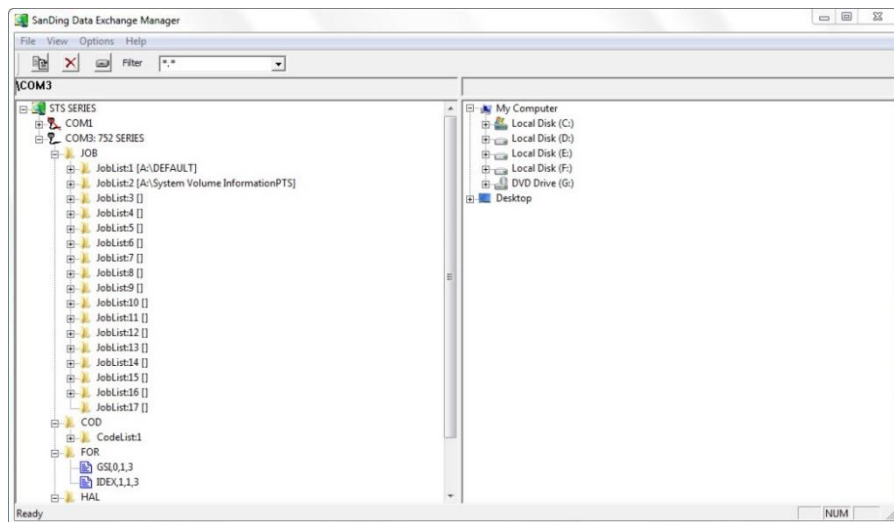


Right click the COM3 (*already checked in step 2.1*), click port set, and set the parameters to

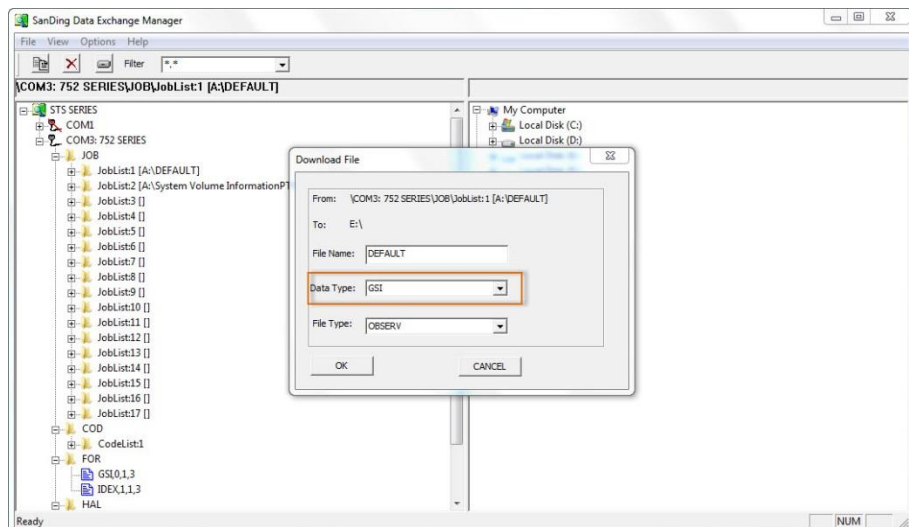
be exact the same as the total station. Click OK to confirm.



Then click the left click the “+”, it will show the job list of the total station.



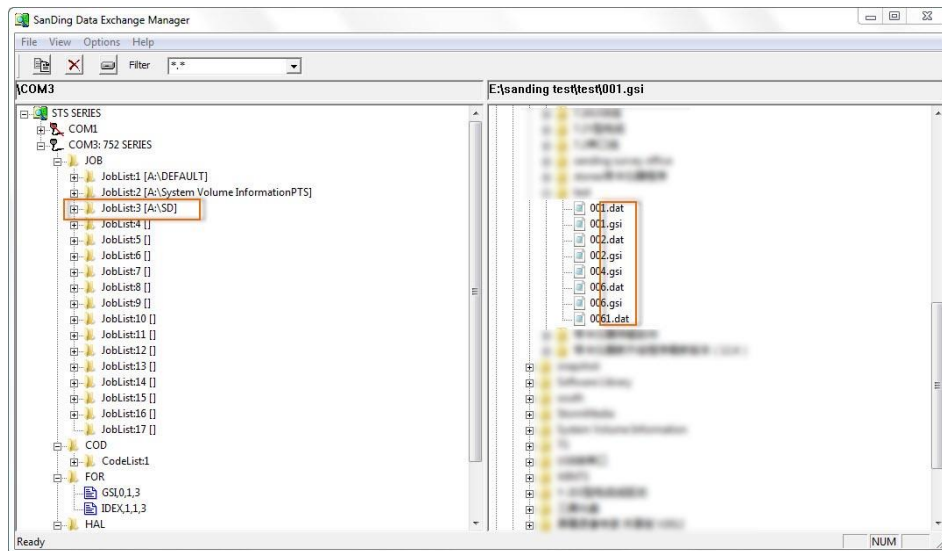
To download, directly drag the job of the left column to a local disk in the right column.



2.2 Upload

First create a job in the total station, then create the GSI file to be uploaded. Note that the GSI to be uploaded should be in the local disk, not on the desktop, and with the extension name (.GSI).

After that, reconnect the total station and the computer via Data Exchange Manager. You will find the job listed on the left column.

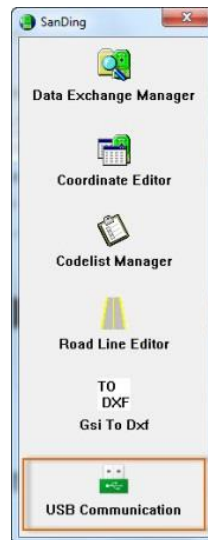


Directly drag the GSI file to the created job.

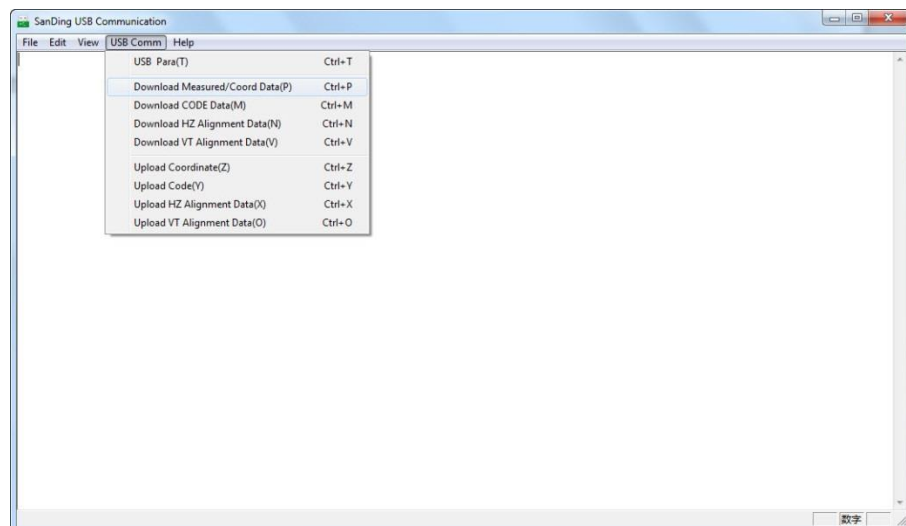
3. Transferring via miniUSB cable

3.1 Download

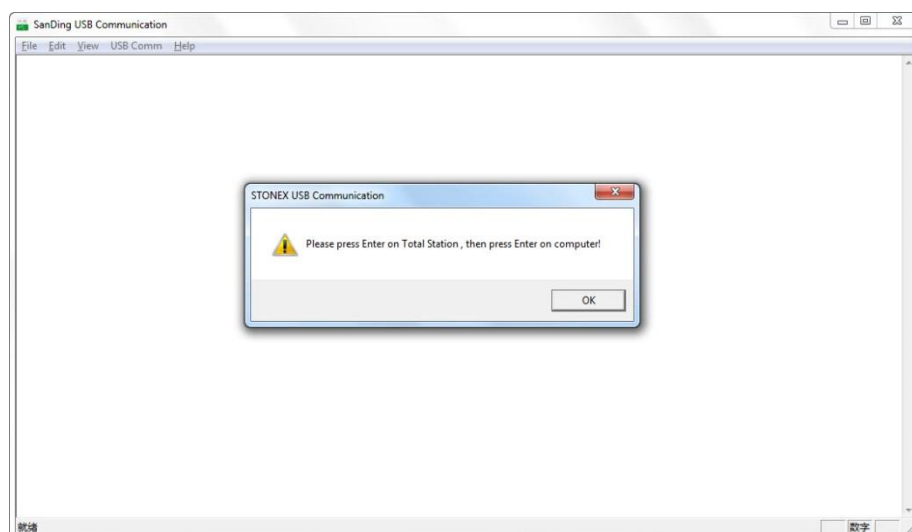
Click the “USB Communication”



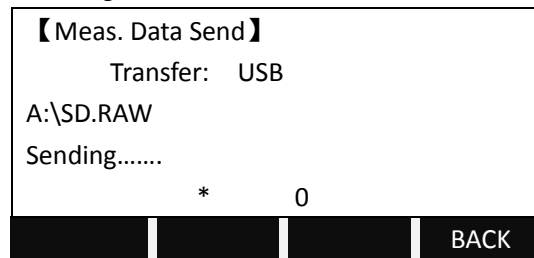
In the software, click USB Comm-Download Measured/Coord Data(P)



Then it will show as below



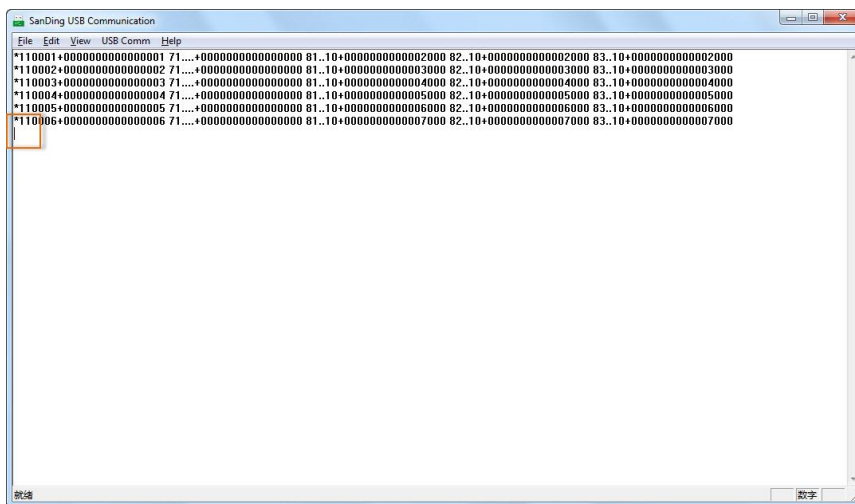
Then on total station,press MENU—PAGE—F3.Data Transfer—Choose the Transfer to be “USB”, after USB initializing, then the screen will show as below:



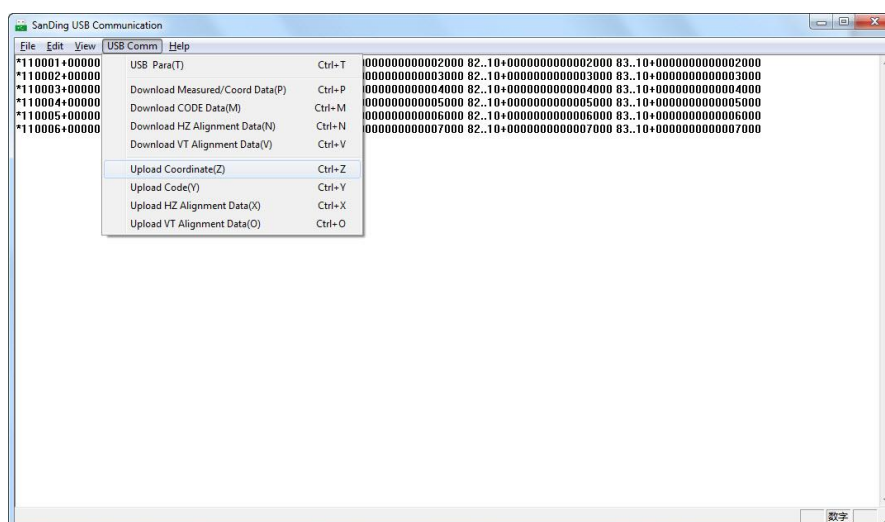
Then click “OK” on the software

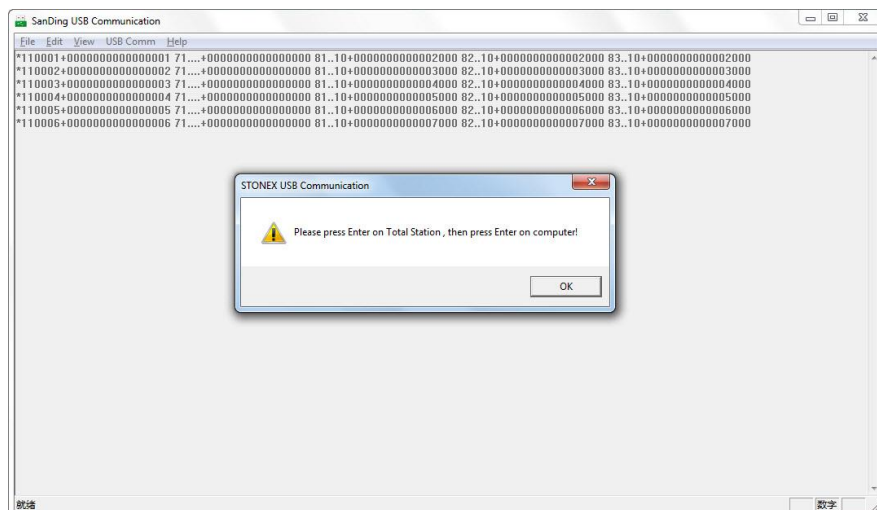
3.2 Upload

Frist copy the data into the software windows, note that the cursor should be after the last row.

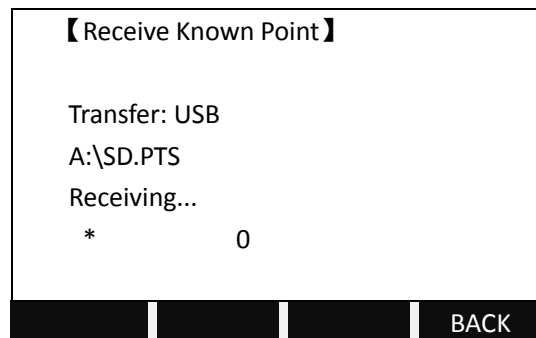


Then click USB Comm—Upload coordinates(Z), then it will show like below:





In the total station, press MENU—F4.File Management—PAGE—PAGE—F2. USB Receive—F1. KnownPt, choose the job to receive the data, then press OK, after USB initializing, the screen will show as below



Then click OK in the software.